

# The Softshell Jacket WOMENS

Designed with clean lines, this durable, reliable softshell provides great value. It delivers warmth and comfort. Perfect for corporate uniforms or casual wear.



# The Softshell Jacket

## WOMENS

### SPECIFICATIONS

**MATERIAL:**

Woven softshell bonded to microfleece lining

**SIZES:**

XS (8), S (10), M (12), L (14), XL (16), 2XL (18), 3XL (20)

**SIZING CHART**

SIZE	XS (8)	S (10)	M (12)	L (14)	XL (16)	2XL (18)	3XL (20)
HALF CHEST	48	50.5	53	55.5	58	60.5	63

**DECORATION TYPES:**

Embroidery, Digital Transfer, Plastisol Transfer, Screenprint

**DECORATION AREAS:**
**Print/Transfer areas**

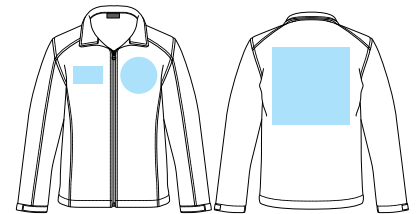
Right/Left Chest: 100mm W x 60mm H

Back Panel: 260mm W x 260mm H

**Embroidery areas**

Right/Left Chest: 125mm Diameter

Back Panel: 260mm W x 260mm H


**DESCRIPTION:**

- Woven softshell bonded to microfleece lining
- Zip through cadet collar
- Full front, reverse coil ISE® zipper
- Front zippered pockets
- Adjustable cuffs
- Showerproof
- Easy decoration access

**COLOURWAYS:**

Black

**PACKAGING:**

Each jacket packed in an individual poly bag with a silica gel sachet. White printing on the poly bag.

**CARTON QUANTITY:**

20 pieces

**CARTON MEASUREMENTS:**

XS / S / M: 56cm W x 38cm D x 35cm H

L / XL : 62cm W x 38cm D x 32cm H

**CARTON WEIGHT:**

11.75kg