

The Softshell Jacket MENS

Designed with clean lines, this durable, reliable softshell provides great value.



The Softshell Jacket MENS

SPECIFICATIONS

MATERIAL:

Woven softshell bonded to microfleece lining

SIZES:

S, M, L, XL, 2XL, 3XL, 5XL, 7XL, 9XL

SIZING CHART

| SIZE | S | M | L | XL | 2XL | 3XL | 5XL | 7XL | 9XL |
|------------|----|------|----|------|-----|------|------|------|------|
| HALF CHEST | 56 | 58.5 | 61 | 63.5 | 66 | 68.5 | 73.5 | 79.5 | 85.5 |

DECORATION TYPES:

Embroidery, Digital Transfer, Plastisol Transfer, Screenprint

DECORATION AREAS:
Print/Transfer areas

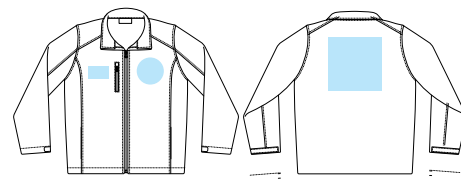
Right/Left Chest: 100mm W x 60mm H

Back Panel: 260mm W x 260mm H

Embroidery areas

Right/Left Chest: 125mm Diameter

Back Panel: 260mm W x 260mm H


DESCRIPTION:

- Woven softshell bonded to microfleece lining
- Zip through cadet collar
- Full front, reverse coil ISE® zipper
- Front zippered pockets
- Zippered front media pocket
- Adjustable cuffs
- Showerproof
- Easy decoration access

COLOURWAYS:

Black

PACKAGING:

All jackets folded in half with sleeves at the back and packed in individual poly bags with a silica gel sachet. White printing on the poly bag.

CARTON QUANTITY:

20 pieces

CARTON MEASUREMENTS:

S / M/ L: 65cm W x 40cm D x 32cm H

XL / 2XL: 65cm W x 40cm D x 35cm H

3XL / 5XL: 70cm W x 42cm D x 32cm H

7XL / 9XL: 70cm W x 42cm D x 32cm H

CARTON WEIGHT:

11.75kg

Measure and weight indications are approximate figures only. We reserve the right to change colours, technical details or designs.

Version A – 24-08-21